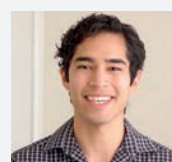


# LESSON 1 TALK ABOUT FOOD



PEDRO CAMPOS

@PedroC

At Sam's Diner. I hope they have food I like!



## 1 VOCABULARY Food groups

**A** ▶ 07-01 Listen. Then listen and repeat.

### FRUIT



a banana



an apple

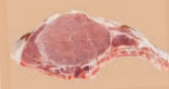


an orange

### MEAT



beef



pork

### VEGETABLES



a potato



an onion



a carrot



a tomato

### POULTRY



chicken



turkey

### DAIRY



cheese



milk



butter

### SEAFOOD



fish



shrimp

**B** What is your favorite:  
vegetable? \_\_\_\_\_ fruit? \_\_\_\_\_ meat / poultry / seafood? \_\_\_\_\_

**C PAIRS** Compare answers.

**A:** Oranges are my favorite fruit, but I love apples and bananas, too.

**B:** I like oranges and apples, but I don't like bananas.



## 2 GRAMMAR Count / non-count nouns; Some and any

### Count / non-count nouns

#### Count nouns

= things you can count

one tomato

two onions

five bananas

#### Non-count nouns

= things you cannot count

soup

butter

milk

**Note:** Non-count nouns take singular verbs.

*Cheese is my favorite food.*

*The beef isn't good.*

### Some and any

#### Yes/no questions

Do you have

**any**

**some**

milk?

oranges?

**Note:** We usually use *any* in yes/no questions. We can also use *some* in yes/no questions when we offer or ask for something.

#### Statements

##### Affirmative

Yes, I have **some** milk.

##### Negative

No, I don't have **any** oranges.

>> FOR PRACTICE, GO TO PAGE 119



### 3 PRONUNCIATION

**A** ▶ 07-03 Listen. Notice the different vowel sounds.

Then listen and repeat.

/i/ cheese meat beef turkey

/ɪ/ chicken fish shrimp a little bit

**B** ▶ 07-04 Look at each pair of words. Listen and circle the word you hear. Then listen and repeat.

1. eat / it

4. seat / sit

2. he's / his

5. these / this

3. leave / live

**C** **PAIRS** Practice the conversation. Use the foods in 3A.

**A:** Does the dish have \_\_\_ in it?

**B:** A little bit.

**A:** Oh. I don't eat \_\_\_.

#### The vowels /i/ and /ɪ/

Notice the different vowel sounds in *meat* /i/ and *fish* /ɪ/. The sound /i/ (*meat*) usually has a spelling with e. The sound /ɪ/ (*fish*) usually has a spelling with i.

### 4 CONVERSATION



**A** ▶ 07-05 Listen or watch. Check (✓) all correct answers.

Pedro doesn't eat \_\_\_.

☐ beef

☐ carrots

☐ pork

☐ milk

☐ chicken

☐ cheese

☐ apples

☐ onions



**B** ▶ 07-06 Listen or watch. Complete the conversation.



Pedro: Does the **tomato** soup have \_\_\_\_\_ in it?

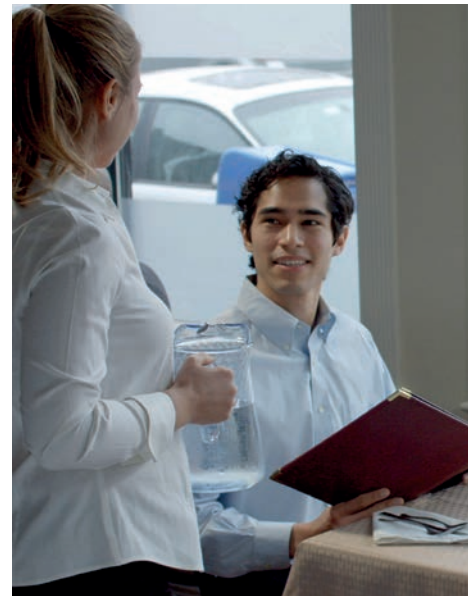
Server: Yes, it does. There's milk in it. We have **chicken** soup.

Pedro: Oh ... I don't eat meat.

Server: Oh. Well, how about \_\_\_\_\_ soup?

Pedro: Does it have any **onions** in it?

Server: Yes, it does.



**C** ▶ 07-07 Listen and repeat. Then practice with a partner.

**D** **PAIRS** Make new conversations. Use these words or your own ideas.

**carrot**

**beef**

**tomatoes**

### 5 TRY IT YOURSELF

**A** **MAKE IT PERSONAL** Plan an interesting dish. Use words in 1A.

Give it a name. What do you need to make the dish?

**A:** Let's make a chicken dish.

**B:** OK. We need chicken, an onion ...

**B** **CLASS** Report to the class. Then vote on the most interesting dish.

Our dish is called "Grandma's Chicken." It has onions, a tomato, ...

